

# Applying Frosted Window Film - (Standard Instructions) v 2.1

Firstly, clean your glass with a lint free cloth and glass cleaner and make sure the edges of the frame are free from any loose paint or fibres.

You'll need to prepare a large flat work surface, such as a kitchen table. It needs to be completely clear, clean and free from dust, pet hairs, etc.

## You will also need:

a spray bottle filled with water and a few drops of washing up liquid  
an old credit card  
a pin  
and someone nice to help you!

## How to apply your window film:

Give your hands a quick wash, and lay the window film onto the table, frosted side down, white backing side up. Establish which are the top two corners of the window film.

Wet your hands with the detergent solution so that you'll be able to touch the film and not leave finger prints.

Now you are ready to peel off the backing. Begin by peeling one of the top two corners - you will start to see the sticky side of the film (Figure 1). Spray this newly revealed 'sticky' corner with the detergent solution. Hold this corner flat on the table and ask your assistant to peel back the backing paper. Continue to spray the sticky side of the film as it is revealed (Figure 2).

Next, spray the glass of the window liberally with the solution (Figure 3).

Lift the window film by the top two corners and with the sticky side facing the window, place the film onto the glass. The detergent solution will then enable you to slide it perfectly into position (Figure 4).

Using a credit card as a squeegee, carefully smooth over the film from the centre outwards (Figure 5). This will remove excess solution and allow the film to make full contact with the glass. If the film moves out of position, just place your hands flat on the film and gently slide it back again. If possible, have a look at the film from the other side as this may help to reveal air bubbles you have missed. Don't worry if the film looks slightly streaky at this point, the streaks disappear as it dries.

## The following additional stages apply if you have a design cut into your film.

In order to keep the design in place; there is a layer of protective tape covering the design cut-outs

Leave the film for 5-6 hours, so that it has semi-dried. (Or preferably overnight)

Then begin by wetting the tape, using the spray bottle. Now carefully peel off the protective tape covering the cut-out shapes as shown in Figure 6. Finally; pick out the shapes using a pin or similar. (Figures 7 & 8)

The film is dry and fixed within approximately 24 hours.

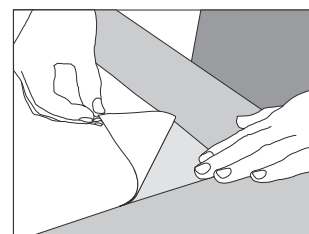


Figure 1

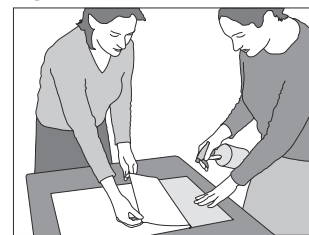


Figure 2

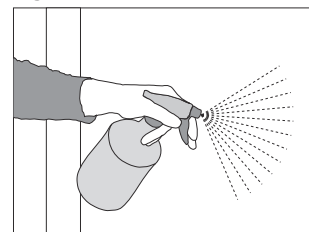


Figure 3

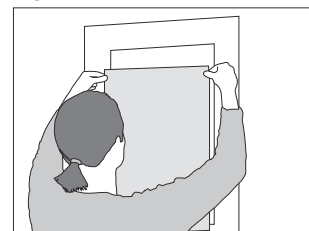


Figure 4

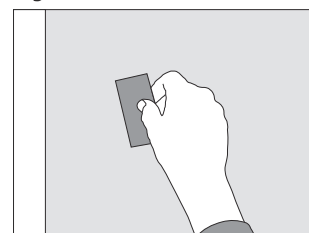


Figure 5

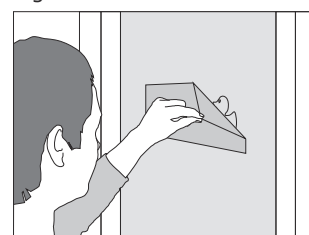


Figure 6

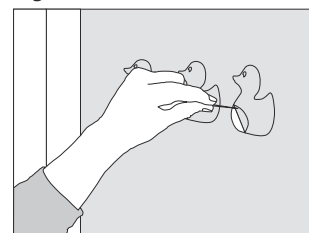


Figure 7

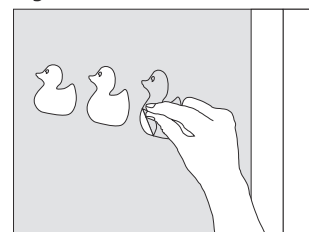


Figure 8

